



Millions of combinations available...  
The perfect Gift - from just £69\*

|  |  |  |   |  |  |  |   |   |  |  |  |
|--|--|--|---|--|--|--|---|---|--|--|--|
| <b>A</b><br>X222 AAA<br>AAS 11<br>46 AB<br>B19 ABM<br>R6 ABT<br>5 ADJ<br>ADS 4<br>V6 AED<br>B17 AGM<br>5 AGR<br>V12 AHN<br>5 AJG<br>6 AJK<br>7 AJP<br>44 AJS<br>C1 AJW<br>15 ARS<br>ALF 253S<br>69 AM<br>AMA 110Y<br>V555 AMB<br>G1 AMC<br>M88 AMD<br>G1 AMH<br>6 AMS<br>A1 ANE<br>C14 ANG<br>G60 APB<br>4 AS<br>45 HY<br>45 KAY<br>B17 ASM<br>45 PEL<br>4 ASW<br>41 AT<br>V8 AD<br>AUD 11T<br>999 AV1 | <b>B</b><br>V8 CAY<br>V6 GDB<br>B12 GDS<br>65 CD<br>CDO 850N<br>777 CFX<br>C11 DER<br>C1 NDE<br>9 CJ<br>G1 CJB<br>G1 CJH<br>G1 C JM<br>G1 CJS<br>B14 CJT<br>70 CKS<br>C111 CKS<br>G1 ORD<br>C14 RAS<br>K14 RKS<br>CLA 55<br>C13 GGS<br>C13 VER<br>32 CM<br>G1 GMB<br>G1 GMC<br>G1 CMH<br>G1 CMS<br>999 C<br>COP 12A<br>R5 BAD<br>V12 BYL<br>G1 GOS<br>G1 GRY<br>V6 COU<br>36 CS<br>10 CSM<br>48 CT<br>CUE 147S | <b>C</b><br>DLS 5<br>300 DSX<br>8 DX<br>999 DS<br><b>E</b><br>E4 STY<br>F58 ECK<br>C13 ECO | <b>D</b><br>VWV 16V<br>G4 RYV<br>G4 RYY<br><b>H</b><br>HAR 12Y<br>C1 HAY<br>H 8 | <b>J</b><br>J6 NYJ<br>898 JJP<br>C16 JSB<br>J6 NYK<br>7 JKS<br>J6 NNL<br>J6 NYL<br>JLS 9 | <b>K</b><br>444 JXU<br>K4 TYS<br>KAT 13S<br>G8 KAY<br>45 KAY<br>KEJ 99<br>9 KG | <b>L</b><br>81 LL<br>5 LLY<br>LQM 5A<br>V8 ESP<br>LOT 4S<br>38 LOT<br>LOU 153T<br>10 WRV | <b>M</b><br>7 MDP<br>MPS 15<br>222 MDX<br>41 ME<br>MCL 45S<br>MER 6E<br>M300 MER<br>38 MG | <b>P</b><br>31 PA<br>1 PAB<br>HUS 541N<br>C1 PAM<br>27 PAM<br>PAM 66H<br>PAR 7Y | <b>R</b><br>R5 TOP<br>FOU X<br>TUR 130D<br>RSW 7<br>R8 RUT<br>RVS 1N<br><b>S</b><br>5 ADJ<br>5 AJG<br>15 AKS<br>54 LY<br>G1 SAL<br>SAL 7S<br>SAT 4N<br>54 XON<br>70 SB<br>5 POM<br>SCTO 7S<br>N9 SC0<br>555 SCX<br>6 SDM<br>B17 PCS<br>D5 EED<br>555 EJD<br>V17 PER<br>V7 PHR<br>G1 PJB<br>8 PJB<br>19 SHS<br>PJK 5<br>5 PUL<br>PJM 8<br>PJS 8<br>G1 PNE<br>PNE 7<br>P1 ONY<br>R5 DAD<br>R5 CAB<br>911 L<br>R8 TUR<br>X80 XTR<br>D1 MLY<br>R5 POR<br>V12 POW<br>PRO 850N<br>69 PR<br>1 MR<br>46 MS<br>B12 MSC<br>1 MSK | <b>T</b><br>7 PAS<br>P4 CHY<br>PAT 281<br>B10 PAX<br>C10 PAY<br>42 PB<br>5 PBC<br>111 PCD<br>5 POM<br>B17 PCS<br>B17 PDC<br>V11 PER<br>G1 PJB<br>8 PJB<br>19 SHS<br>PJK 5<br>5 PUL<br>PJM 8<br>PJS 8<br>G1 PNE<br>PNE 7<br>P1 ONY<br>R5 DAD<br>R5 CAB<br>911 L<br>R8 TUR<br>X80 XTR<br>D1 MLY<br>R5 POR<br>V12 POW<br>PRO 850N<br>69 PR<br>1 MR<br>46 MS<br>B12 MSC<br>1 MSK | <b>V</b><br>V8 OYS<br>TOY 80Y<br>V2 TS<br>V6 TBO<br>R5 TUR<br>TUR 130D<br>9 TW<br>K4 TYS |
|--|--|--|---|--|--|--|---|---|--|--|--|

**THIS IS A VERY SMALL SELECTION - OVER 45 MILLION AVAILABLE!**



Whatever.  
We've probably got your New Reg.™

|   |  |  |   |                                      |                                  |  |   |  |   |  |   |   |   |  |  |  |
|---|--|--|---|--------------------------------------|----------------------------------|--|---|--|---|--|---|---|---|--|--|--|
| <b>D</b><br>D19 DYS<br>D4 RTH<br>D18 DAR<br>DAS 6<br>D4 TEL<br>G1 DAF<br>D8 ATE<br>D13 ERK<br>4 DBT<br>DEN 155S<br>DES 88<br>DEW 11S<br>D6 ENT<br>D6 UNM<br>9 DGM<br>11 DDY<br>9 DUC<br>8 DUK<br>8 DUL<br>D14 NEK<br>57 DM<br>G1 DMB<br>G1 DMH<br>D14 NEO<br>CDO 850N<br>V8 DOD<br>DOO 81E<br>DOR 155W<br>813 DPF<br>G8 LDS<br>80 LDY<br>4 DRG<br>71 DRX<br>45 ELL<br>D5 MEE<br>D15 WAN | <b>E</b><br>E4 STY<br>F58 ECK<br>C13 ECO | <b>F</b><br>F4 S5Y<br>888 FDX<br>BLO 550M<br>V12 BYL<br>G1 GOS<br>G1 GRY<br>V6 COU<br>36 CS<br>10 CSM<br>48 CT<br>CUE 147S | <b>G</b><br>G4 BBB<br>G4 BEY<br>GAR 1N<br>G4 LAS<br>G14 RRY<br>G4 RYK<br>GAR 37H<br>1 GBK<br>M12 GBR<br>11 GCM<br>1 GDD<br>65 GE<br>GEE 5E<br>5 JCA<br>7 GEM<br>G6 NTS<br>R18 GER<br>8 GES<br>B19 GES<br>GGO 1D<br>H1 GCM<br>330 GJX<br>G4 RYK<br>54 GL<br>G1 LYN<br>G8 LDS<br>80 LDY<br>4 DRG<br>71 DRX<br>45 ELL<br>D5 MEE<br>D15 WAN | <b>H</b><br>HAR 12Y<br>C1 HAY<br>H 8 | <b>I</b><br>61 N<br>31 P<br>31 Y | <b>J</b><br>J6 NYJ<br>898 JJP<br>C16 JSB<br>J6 NYK<br>7 JKS<br>J6 NNL<br>J6 NYL<br>JLS 9 | <b>K</b><br>K4 TYS<br>KAT 13S<br>G8 KAY<br>45 KAY<br>KEJ 99<br>9 KG | <b>L</b><br>81 LL<br>5 LLY<br>LQM 5A<br>V8 ESP<br>LOT 4S<br>38 LOT<br>LOU 153T<br>10 WRV | <b>M</b><br>7 MDP<br>MPS 15<br>222 MDX<br>41 ME<br>MCL 45S<br>MER 6E<br>M300 MER<br>38 MG | <b>N</b><br>N30 NCF<br>R4 NDY<br>1 MR<br>46 MS<br>B12 MSC<br>1 MSK | <b>O</b><br>OBR 14N<br>G12 OCA<br>G11 OLA<br>55 OM<br>M50 OMA<br>Y8 ONE<br>33 OO<br>R40 OPR<br>R16 OYO<br>C5 ORH<br>ORW 34M<br>055 OS<br>57 OX<br>7 OYS | <b>P</b><br>31 PA<br>1 PAB<br>HUS 541N<br>C1 PAM<br>27 PAM<br>PAM 66H<br>PAR 7Y | <b>Q</b><br>Q11 QLA<br>9 MB<br>CRO 55M<br>11 MC<br>MCL 45S<br>6 MCP<br>4 MCS<br>777 MXX<br>37 MD<br>B14 MDC<br>6 MDG<br>M12 MDN | <b>R</b><br>R5 TOP<br>FOU X<br>TUR 130D<br>RSW 7<br>R8 RUT<br>RVS 1N<br><b>S</b><br>5 ADJ<br>5 AJG<br>15 AKS<br>54 LY<br>G1 SAL<br>SAL 7S<br>SAT 4N<br>54 XON<br>70 SB<br>5 POM<br>SCTO 7S<br>N9 SC0<br>555 SCX<br>6 SDM<br>B17 PCS<br>D5 EED<br>555 EJD<br>V17 PER<br>V7 PHR<br>G1 PJB<br>8 PJB<br>19 SHS<br>PJK 5<br>5 PUL<br>PJM 8<br>PJS 8<br>G1 PNE<br>PNE 7<br>P1 ONY<br>R5 DAD<br>R5 CAB<br>911 L<br>R8 TUR<br>X80 XTR<br>D1 MLY<br>R5 POR<br>V12 POW<br>PRO 850N<br>69 PR<br>1 MR<br>46 MS<br>B12 MSC<br>1 MSK | <b>T</b><br>7 PAS<br>P4 CHY<br>PAT 281<br>B10 PAX<br>C10 PAY<br>42 PB<br>5 PBC<br>111 PCD<br>5 POM<br>B17 PCS<br>B17 PDC<br>V11 PER<br>G1 PJB<br>8 PJB<br>19 SHS<br>PJK 5<br>5 PUL<br>PJM 8<br>PJS 8<br>G1 PNE<br>PNE 7<br>P1 ONY<br>R5 DAD<br>R5 CAB<br>911 L<br>R8 TUR<br>X80 XTR<br>D1 MLY<br>R5 POR<br>V12 POW<br>PRO 850N<br>69 PR<br>1 MR<br>46 MS<br>B12 MSC<br>1 MSK | <b>V</b><br>V8 OYS<br>TOY 80Y<br>V2 TS<br>V6 TBO<br>R5 TUR<br>TUR 130D<br>9 TW<br>K4 TYS |
|---|--|--|---|--------------------------------------|----------------------------------|--|---|--|---|--|---|---|---|--|--|--|

**ANY NEW REG IN THIS BOX FROM £69 EACH\***

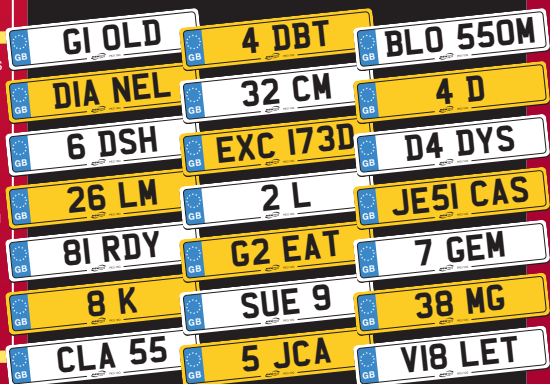
|          |          |          |
|----------|----------|----------|
| XIL 5102 | EHZ 7124 | EHZ 7136 |
| XIL 5183 | EHZ 7125 | EHZ 7137 |
| XIL 5197 | EHZ 7126 | EHZ 7138 |
| XIL 5245 | EHZ 7127 | EHZ 7139 |
| EHZ 7115 | EHZ 7129 | EHZ 7140 |
| EHZ 7118 | EHZ 7131 | EHZ 7266 |
| EHZ 7119 | EHZ 7133 | EHZ 7267 |
| EHZ 7121 | EHZ 7134 | EHZ 7268 |
| EHZ 7122 | EHZ 7135 | EHZ 8120 |

**COMPLETELY FREE TRANSFER SERVICE.**

|   |  |  |  |   |
|---|--|--|--|---|
| <b>B</b><br>B17 JCR<br>9 JCS<br>333 JCX<br>37 JD<br>5 JDC<br>5 JDR<br>C1 JDS<br>J6 NNW<br>5 JSK<br>R9 JSM<br>6 JSM<br>5 JHD<br>5 JHL<br>8 JHS<br>J6 NJS | <b>C</b><br>C9 JPD<br>C1 JRB<br>9 JRP<br>C1 JRS<br>D9 JSB<br>V13 XUM<br>5 JDR<br>C1 JDS<br>J555 JSC<br>5 JSK<br>R9 JSM<br>6 JSM<br>5 JHD<br>5 JHL<br>8 JHS<br>J6 NJS | <b>L</b><br>L319 NNE<br>L315 URE<br>LEL 10T<br>54 LES<br>V13 XUM<br>LHX 4M<br>J841 LEY<br>45 LF<br>5 LGM<br>L1 ONA<br>777 MXX<br>37 MD<br>M15 LJN<br>4 LJS<br>500 LJX<br>23 LK | <b>M</b><br>8 MAS<br>MAW 1N<br>G1 MAY<br>MBE 11S<br>9 MB<br>CRO 55M<br>11 MC<br>MCL 45S<br>6 MCP<br>4 MCS<br>777 MXX<br>37 MD<br>B14 MDC<br>6 MDG<br>M12 MDN | <b>O</b><br>OBR 14N<br>G12 OCA<br>G11 OLA<br>55 OM<br>M50 OMA<br>Y8 ONE<br>33 OO<br>R40 OPR<br>R16 OYO<br>C5 ORH<br>ORW 34M<br>055 OS<br>57 OX<br>7 OYS |
|---|--|--|--|---|

**WHY NEW REG?**

www.newreg.com is a source web site of over 45 million personalised registration marks, all displayed in the true number plate style, giving you a feel for how your New Reg will look.



**OUR HA51 SLE FREE SERVICE...**

- We offer finance with leading financial institutions.
- We handle the entire transfer of your Log Book, Tax Disc and MOT Certificate (where applicable).
- Upon request we handle all your documents by recorded delivery (on request).
- We secure your New Reg with any major credit/debit card immediately.
- Acrylic plates delivered to your door.



**0870 78 76 223**  
or visit [www.newreg.com](http://www.newreg.com)

Calls charged at National Rate, this is NOT a premium rate call. All calls are recorded for your security.

**NEW REG • GOVERNMENT OFFICES • CIVIC CENTRE • WEST PADDOCK • LEYLAND • LANCASHIRE • PR25 1DQ.**  
New Reg sell unissued Government stock and historic combinations dating back to 1903.

\*All subject to availability. DOT transfer fee and terms and conditions, some numbers are subject to VAT. Under the distance selling regulations we must notify you that our service begins immediately upon payment being taken, subsequently no cooling off period or refunds are given and purchased marks are not subject to cancellation. The New Reg logo and 'Whatever. We've probably got your New Reg' are registered trademarks of New Reg Limited.